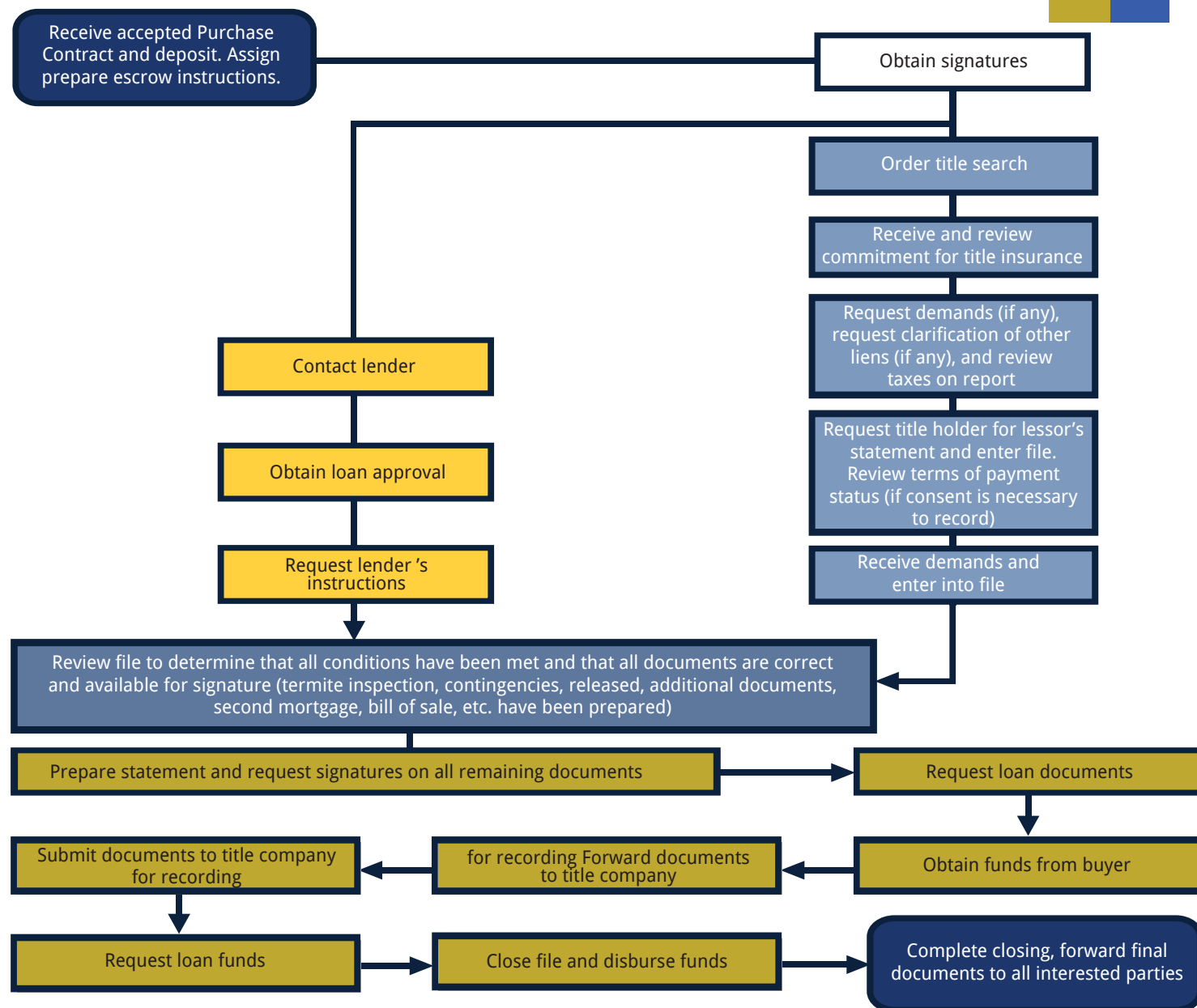




Fidelity National Title®
& ESCROW OF HAWAII

Life of an Escrow



This information is presented for informational purposes only and is deemed reliable but is not guaranteed. It is not our intention to provide any legal financial or business advice. For specific information, please consult a qualified advisor.

OAHU BRANCHES

201 Merchant St, Ste 2100, Honolulu | (808) 536-0404
4211 Waialae Ave, Ste 8050, Kahala | (808) 380-6767
609 Kailua Rd, Ste 204, Kailua | (808) 230-8080
1001 Kamokila Blvd, Ste 151, Kapolei | (808) 380-3640
98-211 Pali Momi St, Ste 805, Aiea | (808) 485-0505

**Trusted everywhere,
every day.**

MAUI BRANCHES WWW.FIDELITYMAUI.COM

285 W. Kaahumanu Ave, Ste 103, Kahului | (808) 893-0556
12 Kiopa'a St, Ste 101, Pukalani (Upcountry) | (808) 573-0110
727 Wainee St, Ste 102, Lahaina | (808) 661-4960
3750 Wailea Alanui Dr, Ste 22 EW, Wailea | (808) 891-2404

KONA BRANCH

75-1000 Henry St, Ste 202, Kailua Kona | (808) 334-0202

www.FidelityHawaii.com